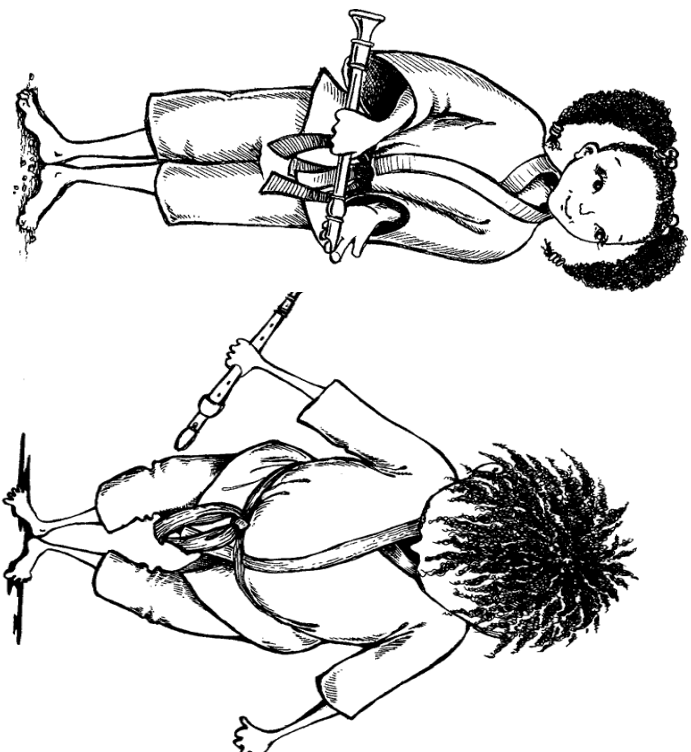


Recorder Karate



A HIGHLY MOTIVATIONAL METHOD FOR YOUNG PLAYERS BY BAE8 PHILIPAK

LEVEL 2

Recorder Karate

White	COTTON EYED JOE	GAB
Yellow	MY RECORDER BAG	GAB
Orange	IT'S RAINING	EGA
Green	GOOD KING WENCESLAS	DEF#GABCD
Purple	MARY HAD A LITTLE LAMB	FGA C'
Blue	SKIP TO MY LOU	EFGAB ^b C'D'
Red	SIDEWALKS OF NEW YORK	DEF#GC'D'
Brown	O COME ALL YE FAITHFUL	DEF#GABC'D'
Black	GOOD BLESS AMERICA	CDEFGAB ^b C'D'

Steps to Earn a Belt

- ✓ Each new piece introduces a new note, new rhythm or a new musical term. Check the bottom of the page for new information.
- ✓ Look for the new notes, rhythm, or musical term in the piece of music.
- ✓ Clap and count the rhythm using syllables (1 & 2 & 3 & 4 & etc.)
- ✓ Clap and speak the note names (B-A-G, etc.) in rhythm.
- ✓ “Chinger” (finger the notes with the recorder on your chin) and say or sing the note names in rhythm.
- ✓ Play the notes in rhythm. Start slow and increase in speed later.
- ✓ Play for your belt ONLY after you have learned the piece.
- ✓ I use the following grading rubric. You must get a 5, 4 or 3 to earn your belt.

Grade	Description
5	Plays with very few mistakes and good tone & rhythm
4	Plays with a few mistakes in pitches or rhythm
3	Plays with several mistakes in pitches or rhythm
2	Plays with many mistakes in pitches or rhythm
1	Plays with many mistakes in pitches or rhythm, poor tone, many starts and stops, and/or seems very unsure of fingerings.

Cotton Eyed Joe

White Belt

Level 2

American Folk Song

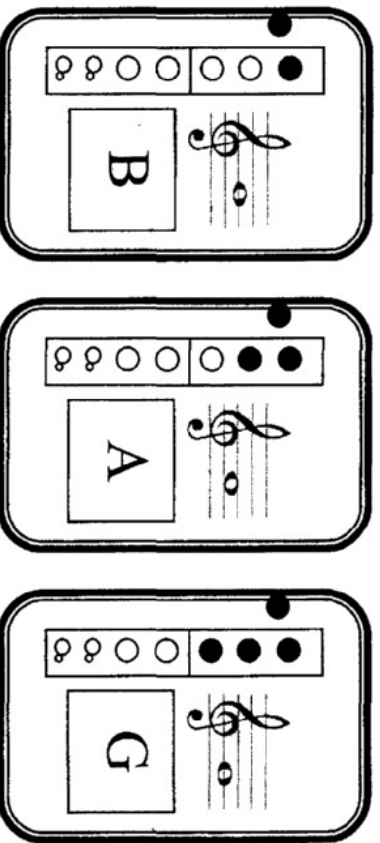
Recorder

Where did you come from? Where did you go? Where did you come from Cot ton Eyed Joe? Where did you

come from? Where did you go? Where did you come from, Cot ton Eyed Joe? If it had n't been for Cot ton Eyed Joe,

I'd been mar ried long time a go. If it had n't been for Cot ton Eyed Joe, I'd been mar ried long time a go!

New notes:



My Recorder BAG

Yellow Belt

Level 2

Patel

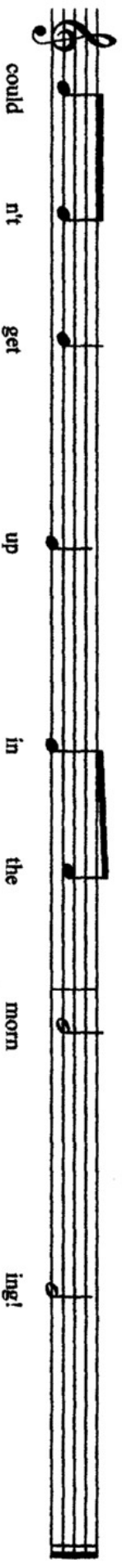
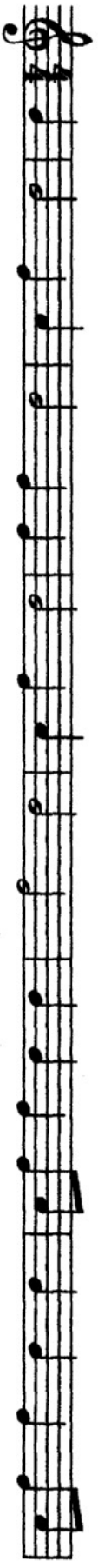
Recorder

This lit tile tune was made for you to read! G A B B B A A G

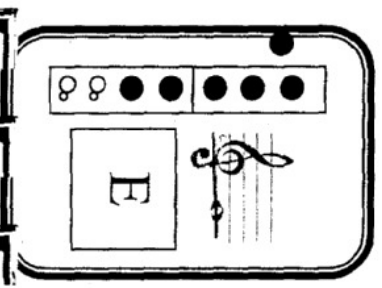
It's Raining Orange Belt Level 2

Traditional

Recorder



New note:



Good King Wenceslas

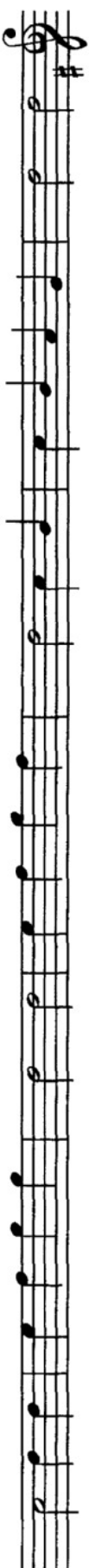
Green Belt
Level 2

English Christmas Carol

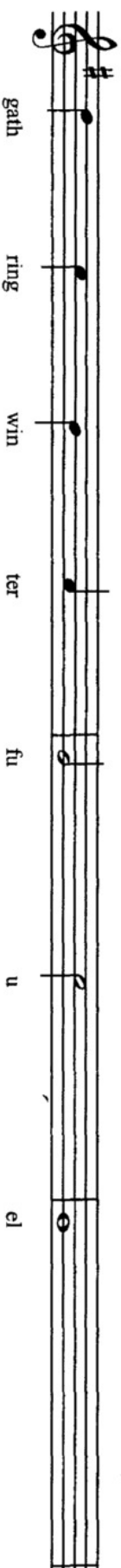
Recorder



Good King Wenceslas looked out on the Feast of Stephen. When the snow lay round about, deep and fast and

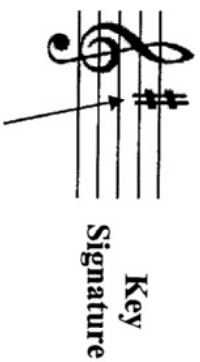


even. Brightly shone the moon that night, though the frost was cruel. When a poor man came in sight,

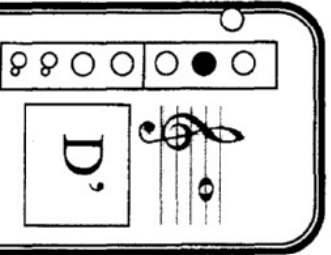
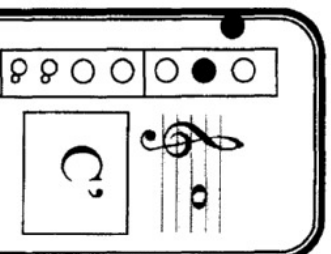
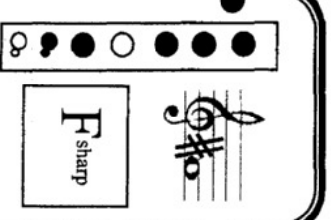
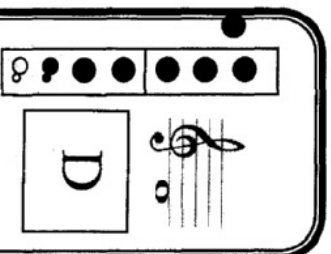


gathered round him, wondrous sight to be seen. 'Twas on this day, when the snow lay round about, deep and fast and

New Notes:



The *sharp* sign on the "F" line tells you that every "F" in the piece of music is F-sharp.



Mary Had A Little Lamb

*Purple Belt
Level 2*


Nursery Rhyme

Recorder

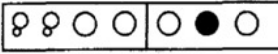
Ma ry had a lit tle lamb, lit tle lamb, lit tle lamb. Ma ry had a lit tle lamb, its fleece was

white as snow!

New notes:



F



C

Skip to My Lou

Blue Belt

Folk Song

Recorder

Flies in the but-ter milk, Skip to my Lou, Flies in the but-ter milk, Skip to my Lou, Flies in the but-ter milk, Skip to my Lou, Flies in the but-ter milk, Skip to my Lou.

Skip to my Lou, Skip to my Lou my dar - ling, Lou, Lou, Skip to my Lou, Lou, Lou, Skip to my Lou.

Lou, Lou, Skip to my Lou, Skip to my Lou my dar - ling.

New note:

Key Signature

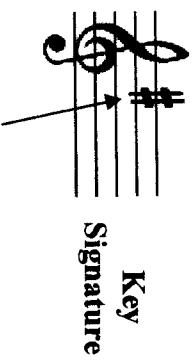
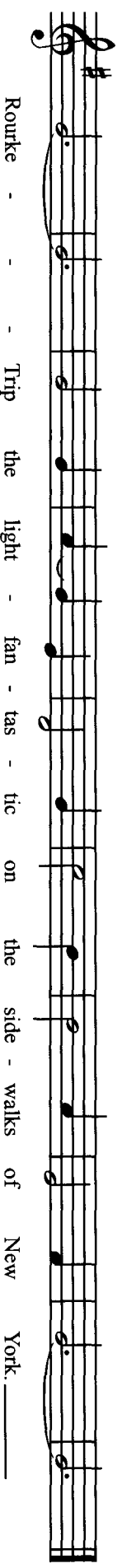
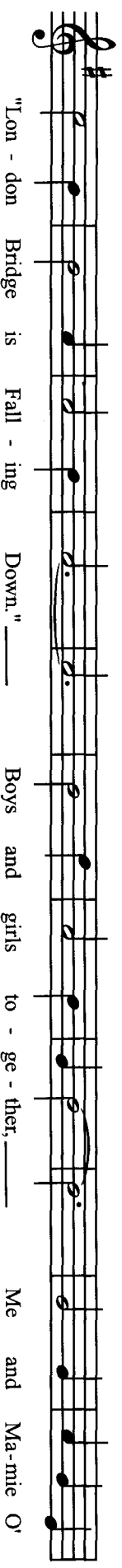
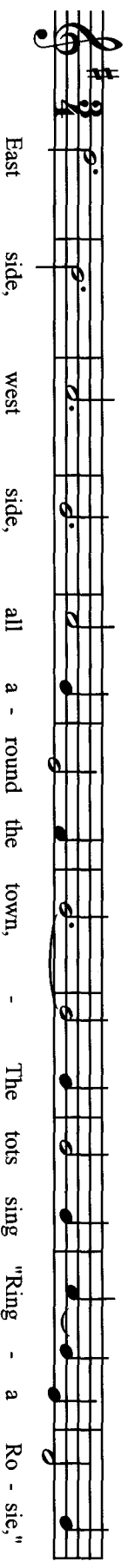
The flat sign on the "B" line tells you that every "B" in the piece of music is B-flat.

Sidewalks of New York

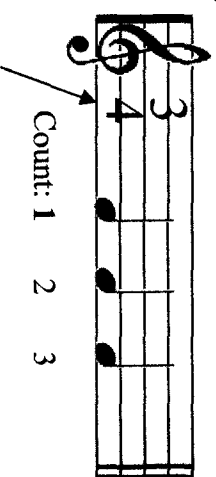
Red Belt

Folk Song

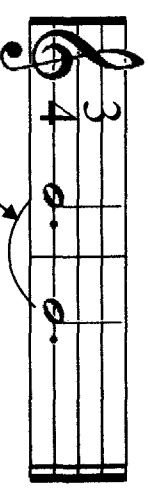
Recorder



The *sharp* sign on the "F" line tells you that every "F" in the piece of music is F-sharp.



Time Signature – in 3/4 time, there are 3 beats **three** beats in each measure, and the **quarter** note gets one beat.



A *tie* combines the value of two notes of the same pitch.

O Come All Ye Faithful

Brown Belt

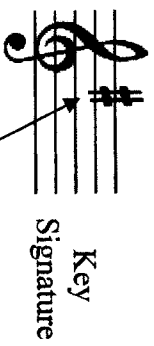
Christmas Carol

Recorder

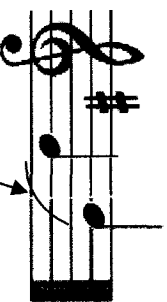
O come, all ye faith - ful, joy ful and tri - um - phant, O come, ye o come - ye to

Beth - le - hem. Come and be - hold Him. Born the King of an - gels. O come, let us a - dore Him. O

come let us a - dore Him. O come let us a - dore Him - Christ - the Lord



The sharp sign on the "F" line tells you that every "F" in the piece of music is F-sharp.

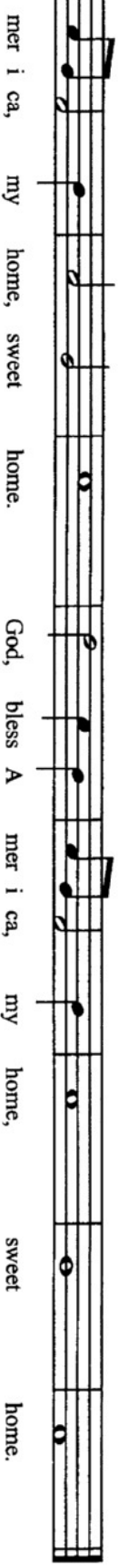
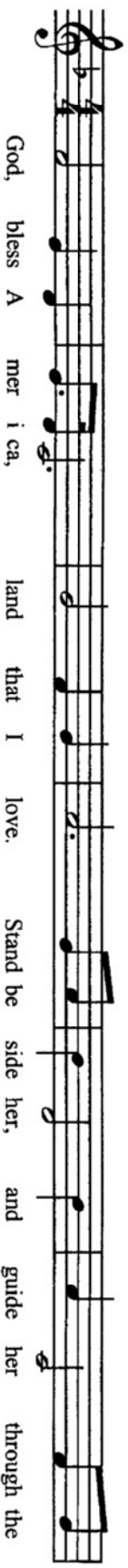


God Bless America

*Black Belt
Level 2*

Irving Berlin

Recorder



Dotted eighth-sixteenth note pattern:



The dotted eighth note is equal in duration to three sixteenth notes